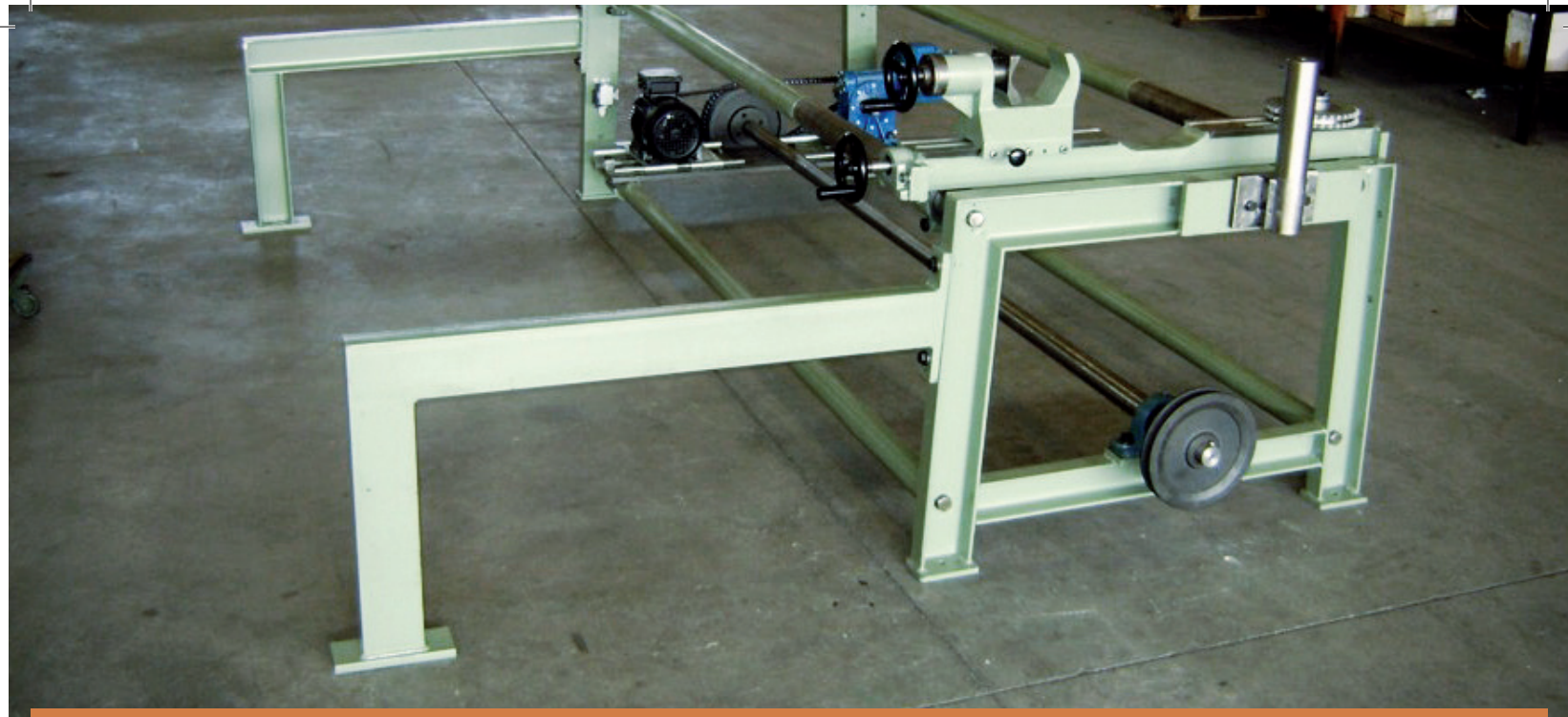


**NUOVA COSMATEX**

**BANCO A MOLARE /  
GRINDING & MOUNTING BENCH**



[www.monteleonegroup.it](http://www.monteleonegroup.it)

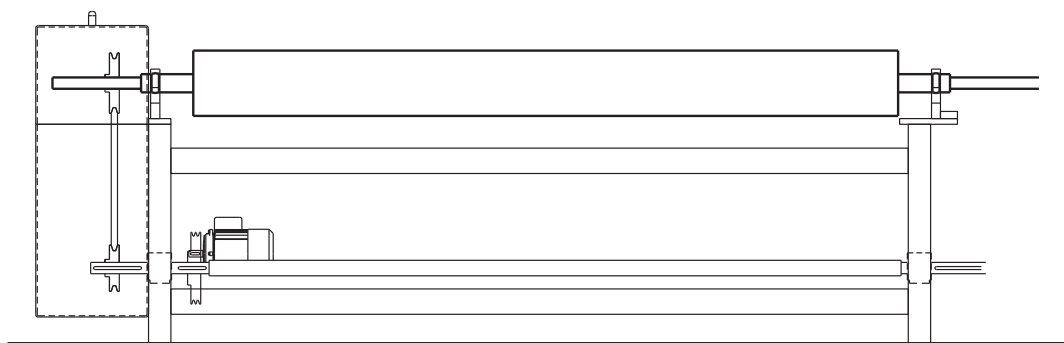
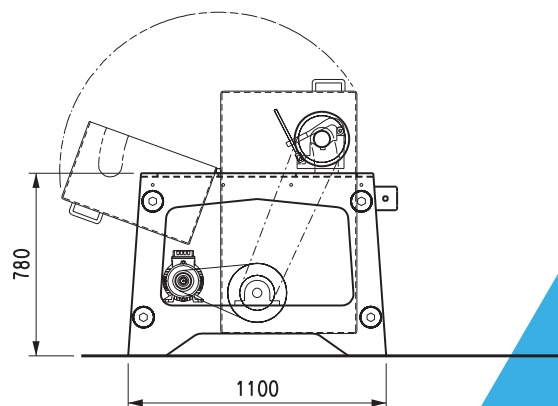
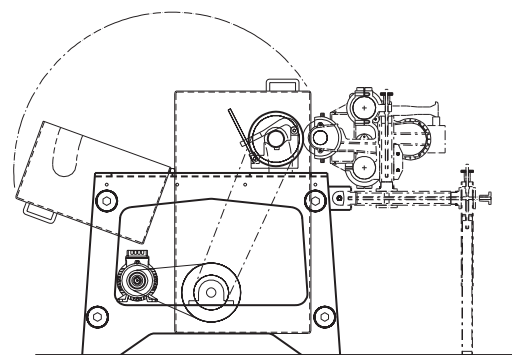


## BANCO A MOLARE

Attrezzatura realizzata in HL 2000, HL 2500mm, HL3000mm in struttura tubolare, per supportare lavoratori, volteggiatori, volanti, completo di motore per la rotazione dei cilindri durante le operazioni di pulizia e molatura, dotato di albero passante per l'installazione dell'argano da applicarsi durante le operazioni di riguarnitura, quadro elettrico di comando.

## GRINDING AND MOUNTING BENCH

Device made with w.w. 2000mm, 2500mm, 3000mm, with a tubular structure, for supporting the worker, stripper, fancy rollers, complete with motor for the rotation of the rollers during the cleaning/grinding operations, equipped with a pass-shaft for the installation of the winch to be used during the clothing operations, equipped with electrical panel.



## NUOVA COSMATEX

Strada Trossi 13/15, 13871 Benna (BI) - Italy

T. (+39) 015 5821 247 / F. (+39) 015 5821 950 / [cosmatex@monteleonegroup.it](mailto:cosmatex@monteleonegroup.it)